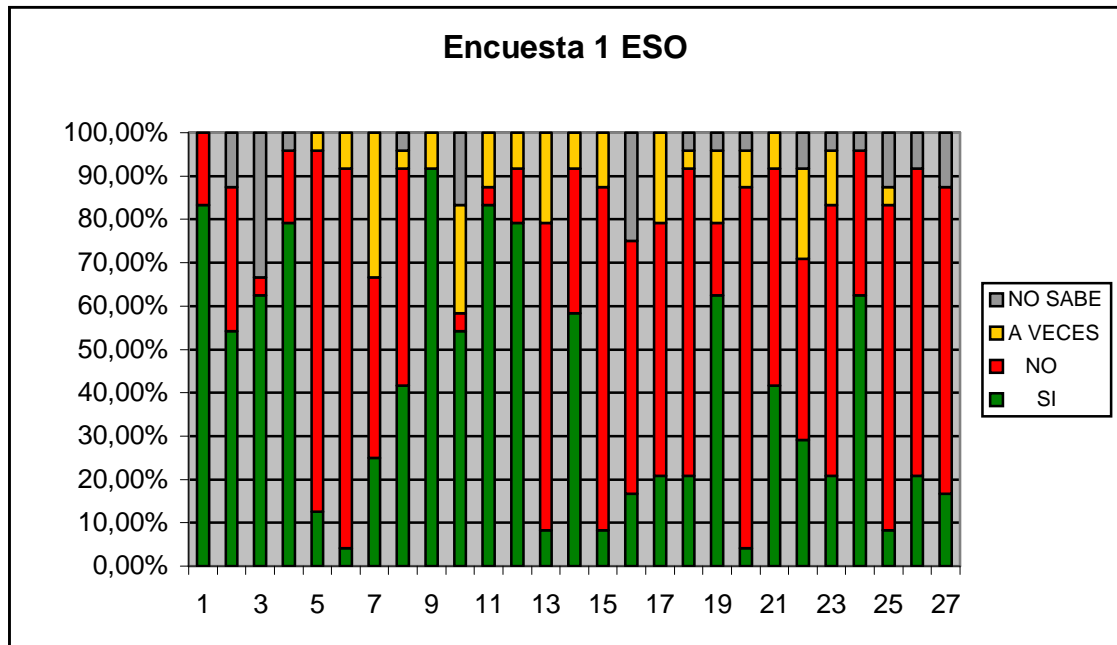
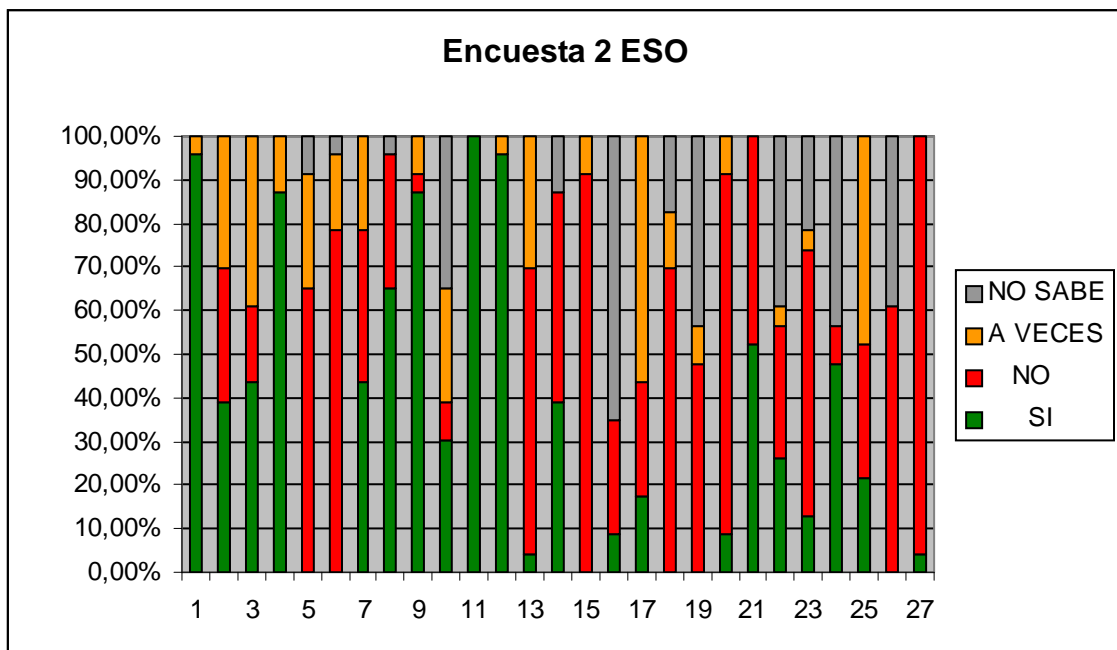


RESULTS OF THE QUESTIONNAIRE ON WATER USE AND HABITS “IES FRAY LUIS DE GRANADA”

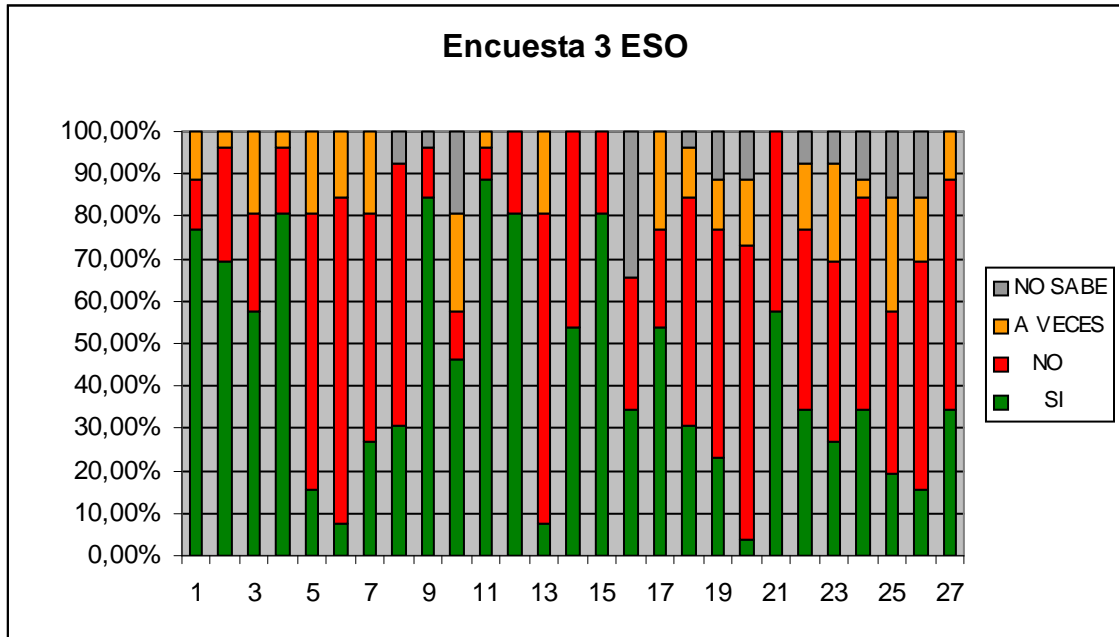
RESULTS IN 1º ESO



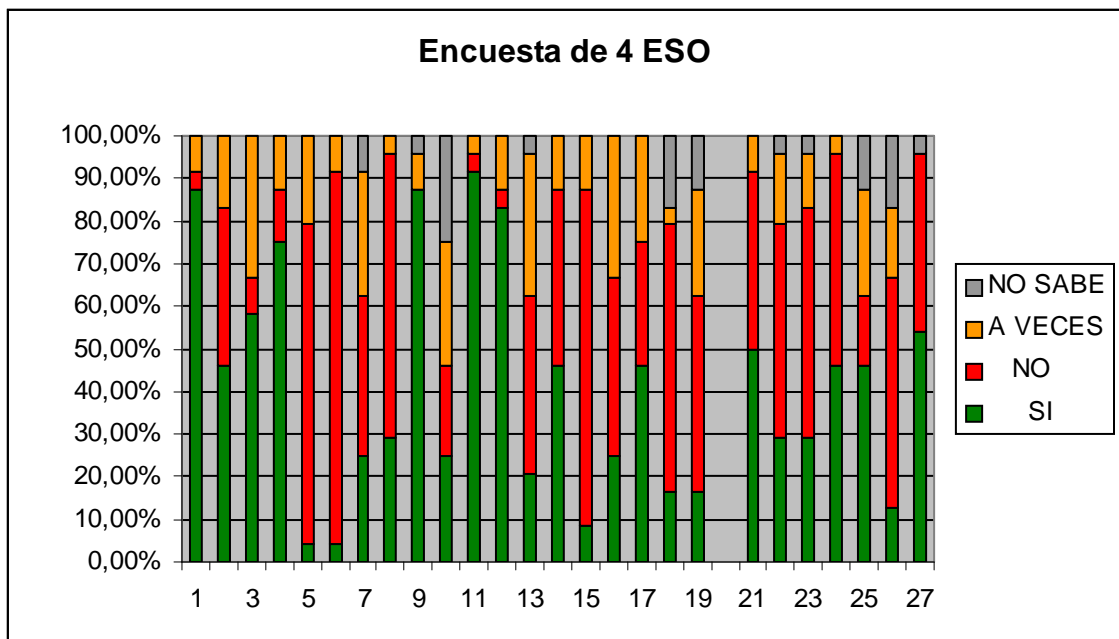
RESULTS IN 2º ESO



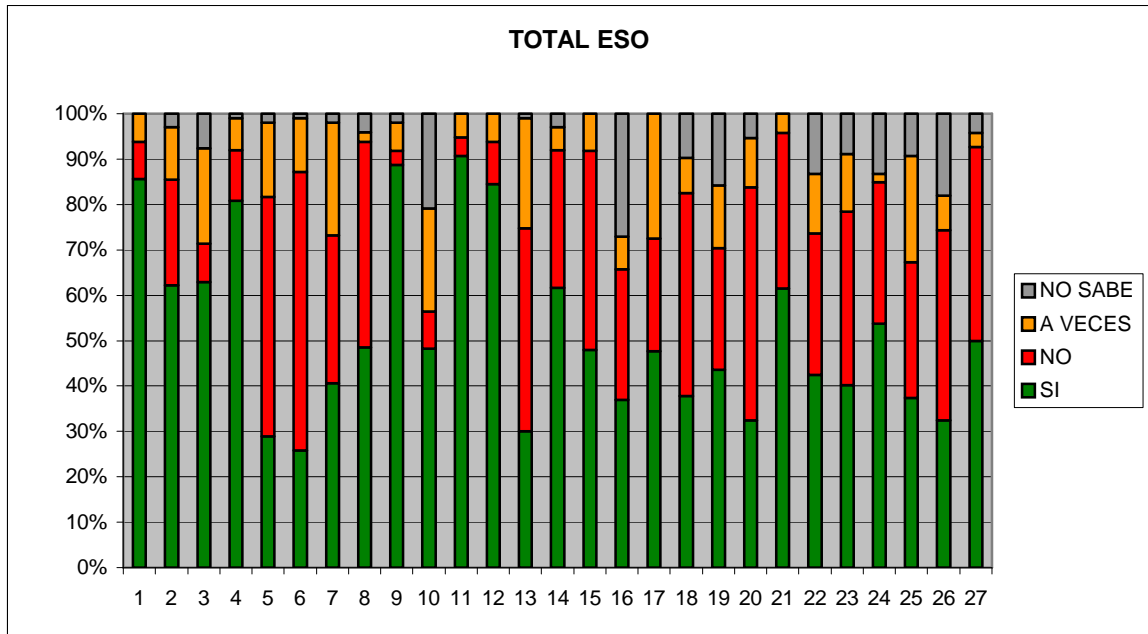
RESULTS IN 3° ESO



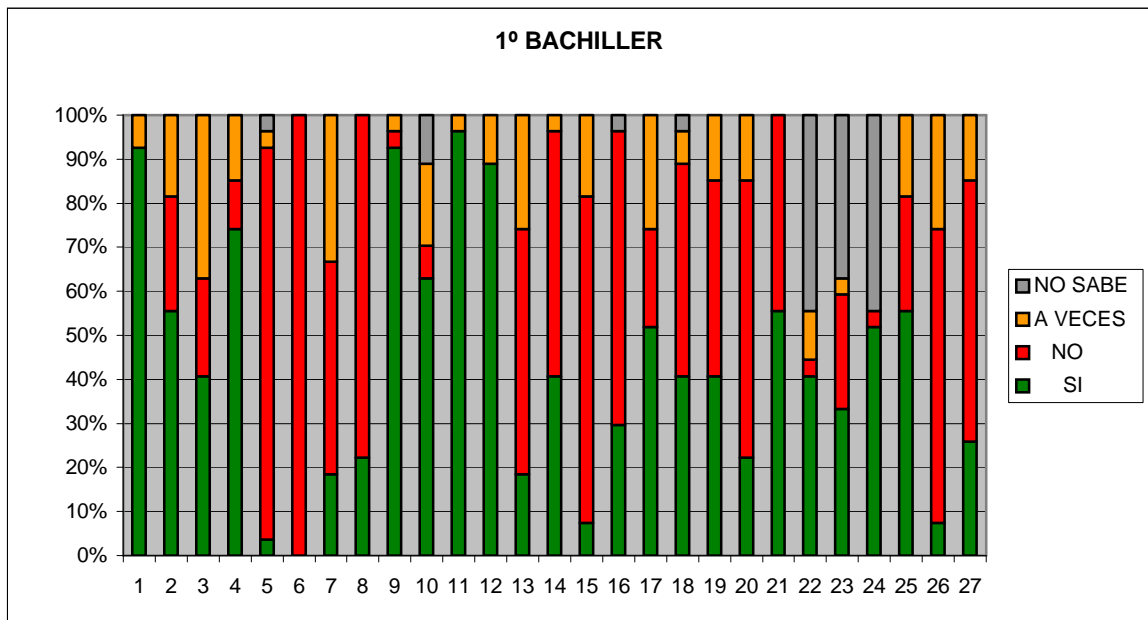
RESULTS IN 4° ESO



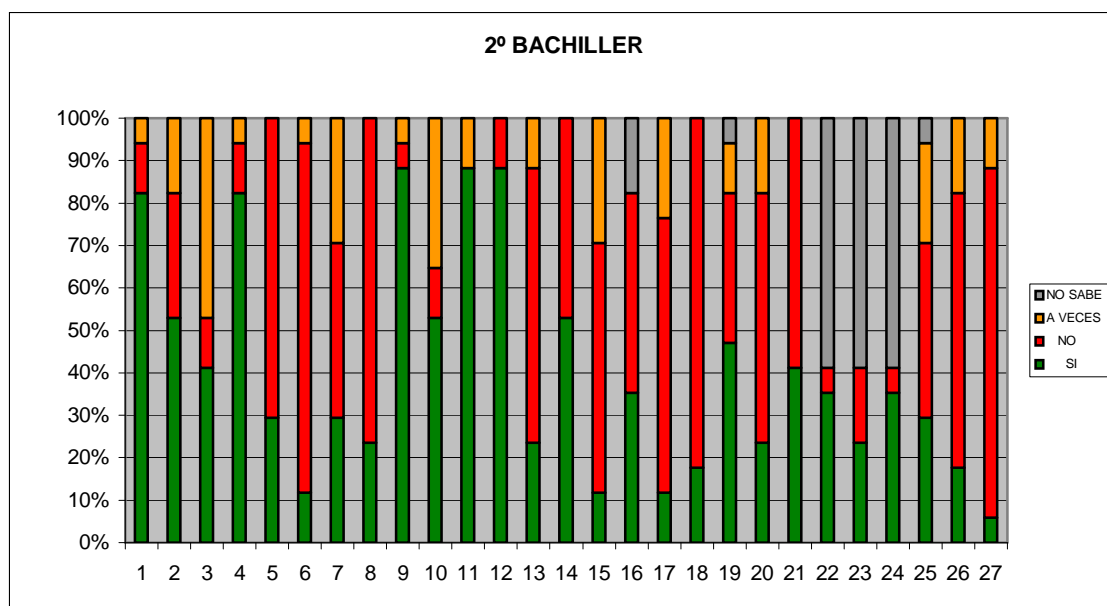
RESULTS IN SECONDARY SCHOOL



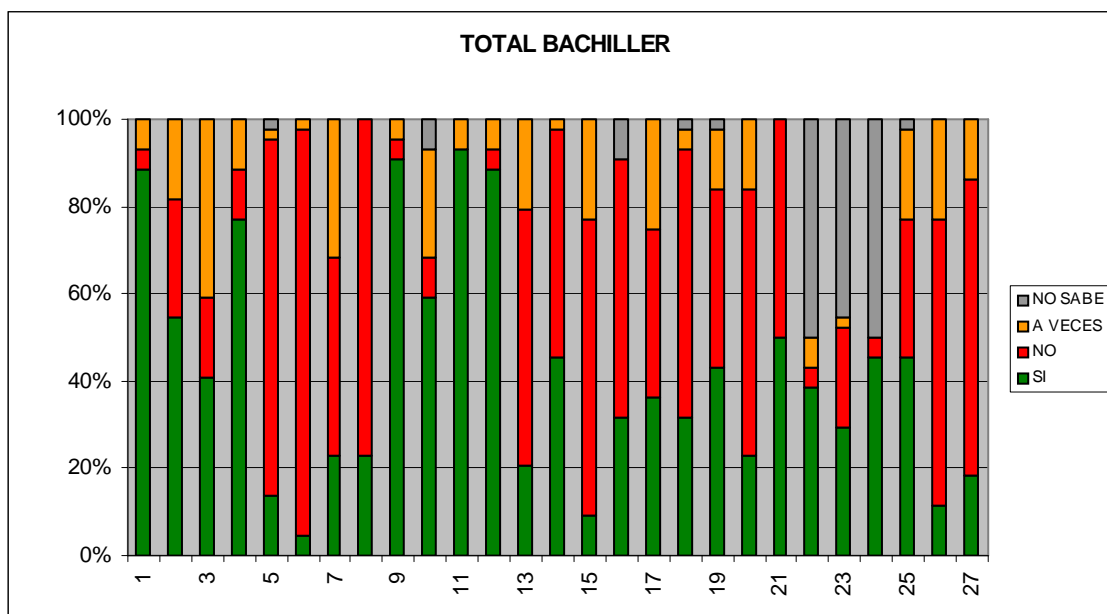
RESULTS IN 1º DE BACHILLERATO



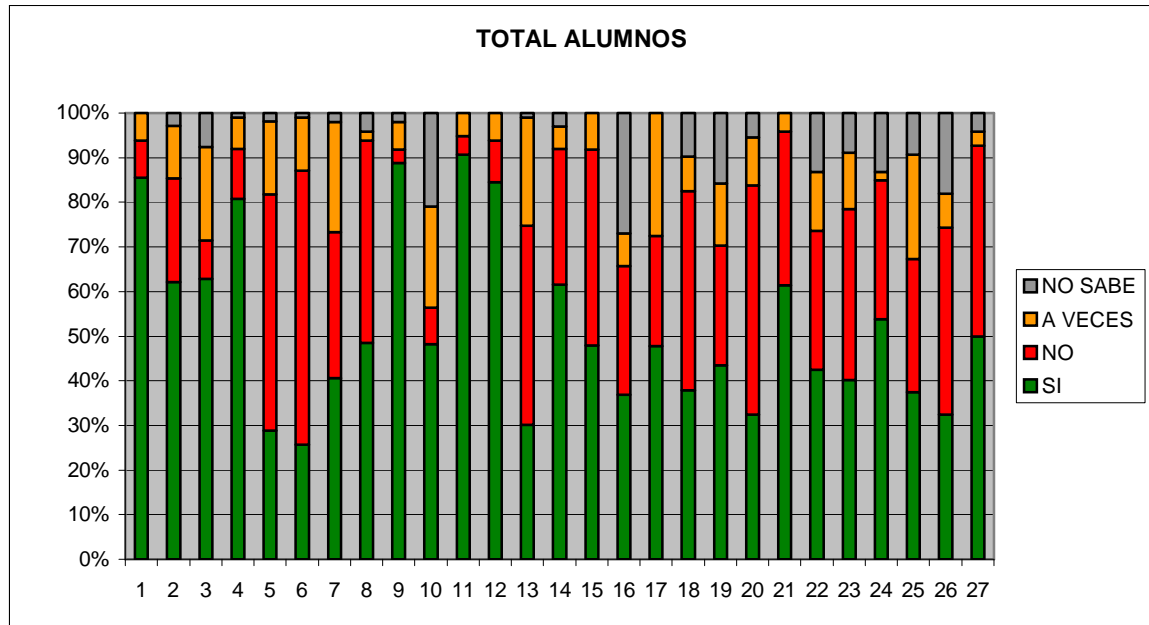
RESULTS IN 2º DE BACHILLERATO



GENERAL RESULTS IN BACHILLERATO



GENERAL RESULTS “IES FRAY LUIS DE GRANADA”



DAILY TASK

- 1.- Do you have a shower instead of a bath? Affirmative 85%.
- 2.- Do you turn off the tap while you soap in the shower? Affirmativ 61%
- 3.-.Does it take you more than five minutes to have a shower? Affirmative 62%
- 4.- Do you turn off the tap while you wash your teeth, shave or soap your hands? Affirmative 80'5%
- 5.- Do you collect the water from the shower while you are waiting for it to become cold? Affirmative 25%
- 6.- Do you reuse the water from the shower to, for example, wash the floor? Affirmative 40%
- 7.- Do you think about the amount of water you use daily? Affirmative 40'5%
- 8.- Do you have any gadget to reduce the amount of water coming out of the tap? Affirmative 49%

We can conclude that although our students are aware of being economical

in expenditure of water when they tidy themselves up, we should go on working in this way .

HOUSEHOLD CONSUMPTION

9.-At home, do you wait for the washing machine or dishwasher to be full before putting on a wash? Affirmative 89%

10.-Do you use short cycles? Affirmative 49%

11.- Do you make sure the taps are closed properly? Affirmative 90%

12.- Do you tell you parents if you see a tap dripping? Affirmative 85%

13.- Do you throw things into the toilet that could be thrown in the bin? Affirmative 30%

14.- Do you have a half-flush option on your toilet? Affirmative 61%

15.- Do you defrost food under the tap? Affirmative 49%

16.- Do you have electrical appliances with a sensor to adjust the amount of water used while on? Affirmative 38%

17.-Do you leave the tap running waiting for cold or hot water? Affirmative 49%

18.- If you do the washing up by hand, do you use both sides of the sink, one to soap and the other to rinse? Affirmative 39%

19.- Do you use small amount of soap, shampoo, or washing powder, to reduce the amount of water needed for the rinse? Affirmative 42%

20.- Do you throw away the used oil down the sink or the WC? Affirmative 31'5%

In relation to the habits of household consumption we should point out that our students are concious that they must turn off the taps if they are dripping or they are not closed properly etc. But concerning to the use of

electrical appliances only 50% of the students are sensible of the need of reducing the amount of water they spend. It is not strange because they don't make use of them frequently. We also notice that housework hasn't been included in their conception of "saving water".

GARDEN AND POOLS

21.- Do you have a private swimming pool at home? Affirmative 61%

22.- Is the garden watered daily?/ Weekly?/ Less often? Affirmative 42%

23.- Is the watering done in the evening? Affirmative 40%

24.-Do you have a system of drop watering?/ Do you water with hose?
Affirmative 54%

These questions have been difficult to answer and consequently to tabulate.

The percentage of questions 22, 23 and 24 has been done on the base of the 61% of the students who have a pool or garden in their houses, for this reason the results are not very reliable.

CHEMICAL CLEANING

25.- When you clean your house (bathroom, kitchen, floor, dust....) do you use chemical and artificial products and then dispose of them through the drains? Affirmative 38%

FREE TIME

26.- Do you agree with the amount of golf courses we have in Spain?
Affirmative 32%

27.- When you are at the pool or the beach, do you take a shower three times a day in the pool or beach area before you go home? Affirmative 50%

As in the case of household consumption of water, our students aren't masively conscious of the need of saving water.